

---

# CRANE COST ACCOUNTING

---

*The cost structure of an airline is vast and exhaustive. Maximum throughput can only be achieved with a fast and accurate cost accounting solution to track, record and manage the costs.*

## Overview

Crane CA is a cost accounting solution providing end-to-end oversight of the operating costs, near real-time profitability calculation, cost and budget management with seamless schedule planning, revenue accounting and crew management systems integration.

Crane CA generates the operating costs with revenue figures collected from revenue accounting systems and retrieves operating costs from actual, contract and allocated prices with near real-time efficiency and industry standard level of accuracy. The Crane CA's powerful data processing and profitability calculation output is provided along with flexible and dynamic tools for cost control, world-class budget planning and accounting.



processes  
50.000+  
invoices  
containing  
**3 million+**  
**invoice details**



# Benefits



## Improved Revenue

Crane CA's contribution to profit is indisputable; not only preventing invoice overpayment but also providing more efficient cost control operation through use of workforce. Additionally, invaluable financial management reporting support and operations by Crane CA help improve the overall business processes.



## Full Grasp of Contracts and Providers

Covering all types of contracts including complex and scenario-based, Crane CA provides detailed analysis of service rate information and manages, controls and renegotiates them. All contracts and rates definitions can also be managed in a single glance.



## Accurate Financial Management

By accurately calculating flight-related costs based on actual operational data and supplier contracts at the time of flights, Crane CA generates accruals and posts figures to accounting systems. This helps financial management to revise or update planning, forecasting and budgeting processes on time.



## Increased Planning and Forecast Efficiency

Real time cost figure reporting at flight, leg, route or reporting group levels enables detailed profitability analysis, budget planning, forecasting or simulation even in the individual flights.

calculates  
profitability and  
accruals with  
**98% +**  
accuracy

# Key Features

Crane CA offers a variety of features depending on your needs and infrastructure. Among the features of Crane CA are:

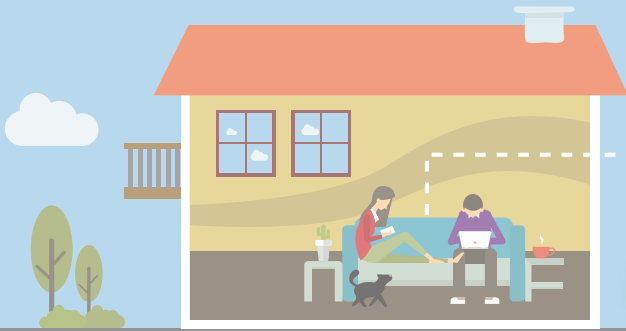
- Real-time forecasting
- Real-time profitability analysis
- World standard KPI reports
- Contract management
- Financial planning
- Support of all cost groups
- Auto invoice verification
- Accrual generation



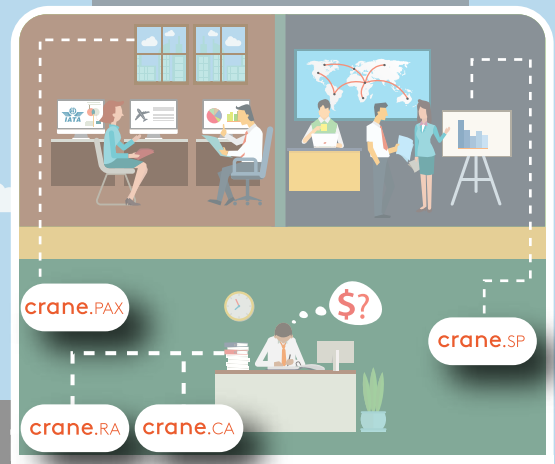
# Components



Turnkey solutions for every step on the way.



crane.IBE

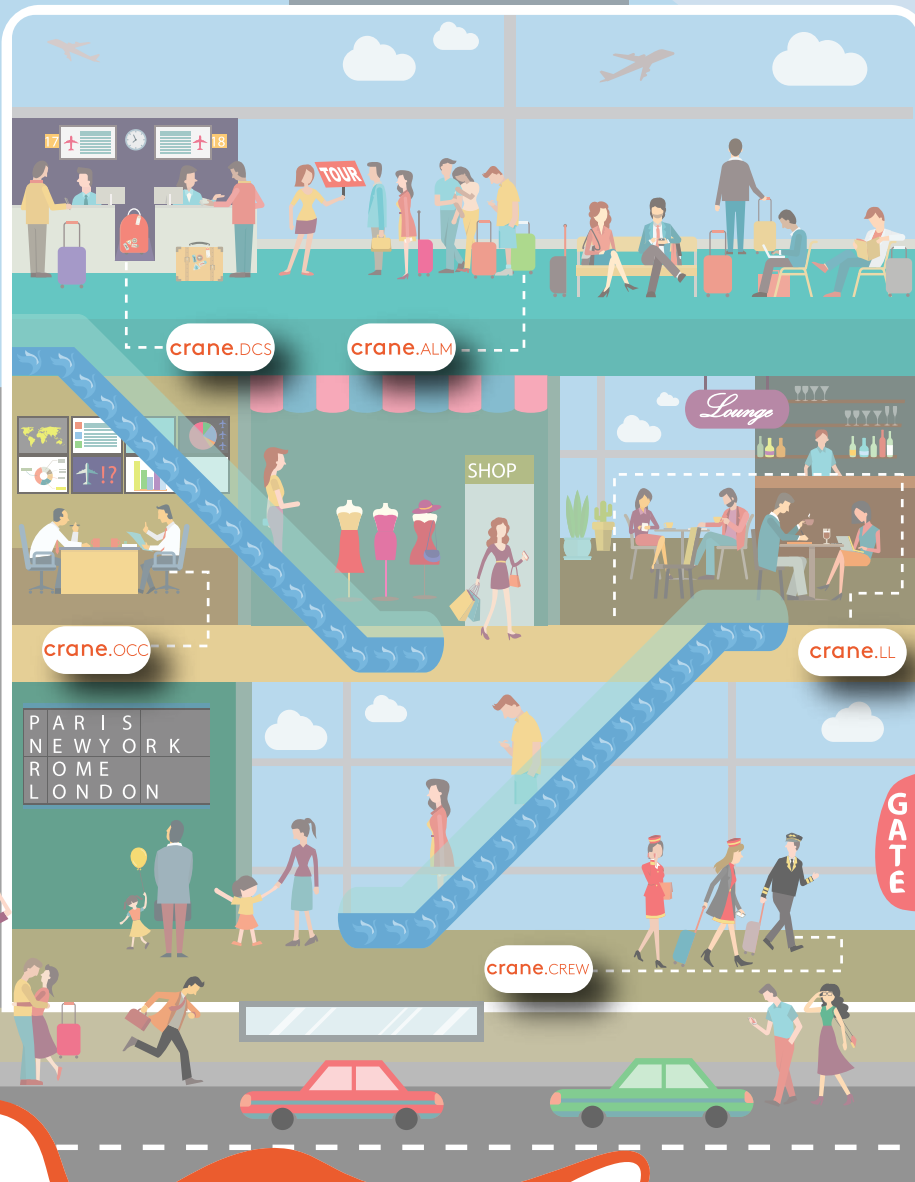


crane.PAX

crane.SP

crane.RA

crane.CA



crane.DCS

crane.ALM

crane.OCC

crane.LL

crane.CREW



crane.CCL



**Passenger Service System**

- crane.PAX** Reservation & Passenger Service
- crane.IBE** Internet Booking Engine
- crane.ALM** Allotment Manager
- crane.DCS** Departure Control System
- crane.LL** Loyalty Layer
- crane.CCL** Customer Care Layer

**Operations Planning**

- crane.SP** Schedule Planning
- crane.OCC** Operations Control
- crane.CREW** Crew Management

**Accounting**

- crane.RA** Revenue Accounting
- crane.CA** Cost Accounting



*Better. Together.*





Crane is a sub brand of Hitit.

The consistent increase in Hitit's customer base and geographic reach, as well as continuous follow up business with existing clients are strong indicators that Hitit has achieved high level of customer satisfaction with its offerings, combining an agile approach to their needs with a team that works closely with them as partners on their business.



Contact:

📍 Resitpasa Mah. Katar Cad.  
No: 4/1 Ari Teknokent 2  
Ic Kapi No: 601 34469  
Maslak, Istanbul, Turkiye

✉ contact@hititcs.com  
sales@hititcs.com

☎ +90 212 276 1500

www.hititcs.com  
www.crane.aero

Crane is a sub brand of Hitit

